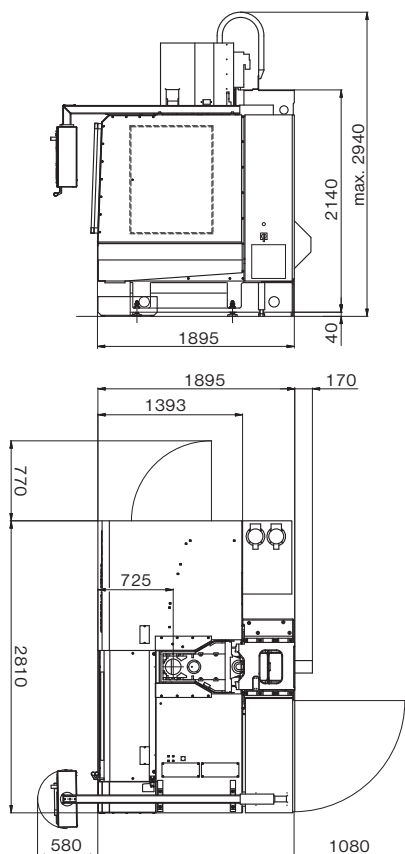


# MCFV 1050

## SPECIFICATIONS

The **MCFV 1050** machining centre is a representative of the classical milling centre with the modernly solved construction with linear guideways in all axes and with digital feed drives. It is equipped with three mutually perpendicular controlled axes. The machine is delivered in several variants which differ with the control systems and used drives of feeds and spindle. So, it can be equipped with the FANUC control system and FANUC drives or with the SINUMERIK or HEIDENHAIN control system and SIEMENS motors.



### Travels

X-axis (work table)	1 020 mm
Y-axis (cross saddle)	510 mm
Z-axis (spindle head)	525 mm
Rapid traverse	25 m/min
Max. working feed	8 m/min
Acceleration	5 m/sec <sup>2</sup>

### Accuracy (VDI/DGQ 3441)

Measuring system	indirect measuring
Positioning accuracy (X,Y,Z)	0.016 mm
Repeatability (Ps max.)	0.008 mm

### Table

Working area	1 200 × 510 mm
Max. load	700 kg
Number of T-slots × width × span	4 × 18 mm × 125 mm
Dimension of central slot	18 H6
Distance of working area from floor	850 mm

### Spindle

	drive used	SIEMENS	FANUC*
Clamping taper		ISO 40	
Maximum speed		10 000 rpm	
Max. torque at overloading		127 Nm	115 Nm
Max. torque SI		90 Nm	97 Nm
Power output at overloading		17 kW	26 kW
Power output SI		12 kW	22 kW
Distance of spindle nose to table		200 – 725 mm	
Transmission type		belt drive	

### Tool magazine

Number of tool pots in magazine	20
Tool interchange time	6 sec
Tool maximum diameter:	
– fully occupied magazine	90 mm
– without adjacent tools	160 mm
Tool maximum length	300 mm
Tool maximum weight	8 kg

### Power supplies

Nominal voltage of mains	3 × 400 V/50 Hz
Operational power input	25 kVA
Compressed air	0.6 – 0.8 MPa

### Complementary data

Floor layout of machine without chip conveyer	2 810 × 1 895 mm
Machine maximum working height	2 940 mm
Machine weight	4 800 kg

### Control system

SINUMERIK, HEIDENHAIN\*, FANUC\*

### STANDARD VERSION

- SINUMERIK control system
- Siemens digital drives
- Indirect measuring
- Tool magazine with direct tool change (20 tools)
- Tool holder automatic air blasting
- Coolant unit with tool cooling system
- Chip buckets

### OPTIONAL EQUIPMENT\*

- Workpiece dimension checking probe
- Tool dimension checking probe
- Tool cooling with coolant through spindle axis – 20 bar – 55 bar – 70 bar
- Tool cooling with air through spindle axis
- Clamping taper CAT 40, BT 40
- Rotary table – 4th axis
- Chip conveyer
- Manual washing-off
- HEIDENHAIN control system
- FANUC control system
- FANUC digital drives

### SINUMERIK CNC system optional equipment

Electronic handwheel  
 PCMCIA memory card  
 Colour LCD  
 Tool presence monitoring  
 Transmit – facing on rotary workpieces  
 Tracyl – transformation of curves on cylindrical surface

### FANUC CNC system optional equipment

Part program memory expansion to 256 kB  
 Electronic handwheel

Descriptions of illustrations and specifications may not always correspond with the machine latest version.

Manufacturer  
**TAJMAC-ZPS, a. s.**  
 Třída 3. května 1180  
 764 87 Zlín, Malenovice  
 CZECH REPUBLIC  
 Tel.: +420 577 532 072  
 Fax: +420 577 533 626  
 www.tajmac-zps.cz  
 e-mail: info@tajmac-zps.cz

Holding  
**TAJMAC-MTM, S. p. A.**  
 Via Gran Sasso 15  
 20092 Cinisello Balsamo (Mi)  
 ITALY  
 Tel.: + 39 02 66017878  
 Fax: + 39 02 66011457  
 www.tajmac-mtm.it  
 e-mail: tajmac@tajmac-mtm.it